

News 2016

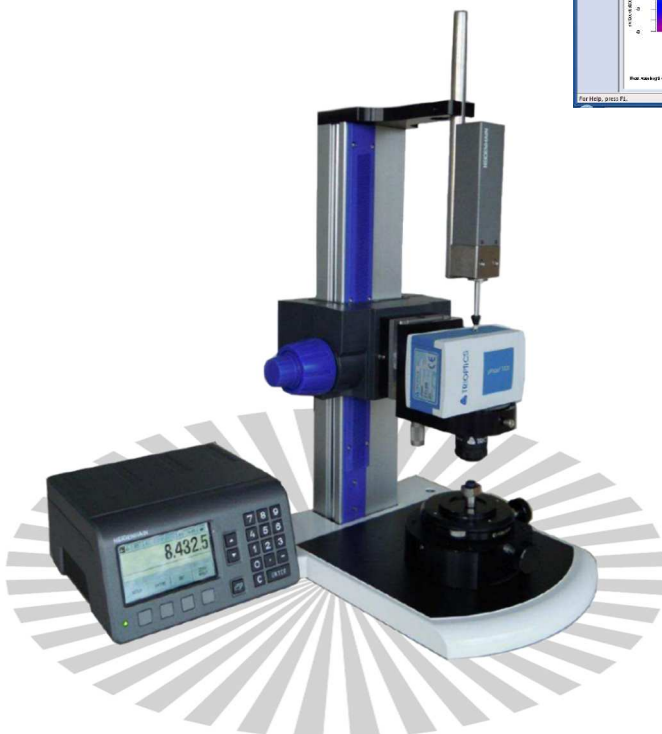
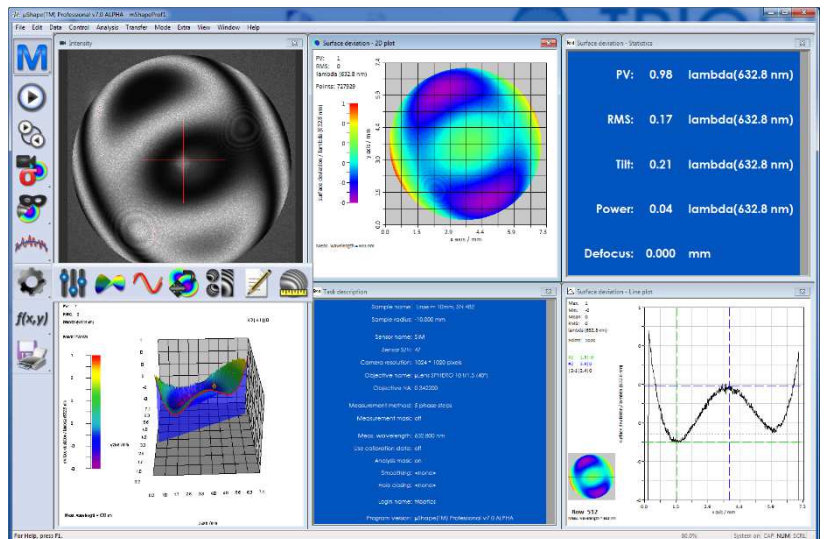


μPhase® 3 USB

- New camera chip with **1200 x 1200** pixel and a higher bit depth (12bit)
- **USB 3.0:** faster data communication without a special plug-in card, a commercially available computer or laptop is adequate
- Executable with a 32bit or 64bit for operating systems of Windows 7 or higher versions

μShape™ 7.0

- Improved, clearly structured user interface
- Automatic window arrangement
- Supporting Windows 10 as well
- Compatible to all previous versions



Vertical stand ST+R

- Flexible useable and cost-effective
- Stable table construction with little space required
- For flat and spherical samples up to $\varnothing = 50$ mm
- Optional with radius measurement